

000.620 PD - 008 - BILL OF MATERIALS 4 LITE

ITEM NO.	DESCRIPTION	QUANTITY	PART NO.	FAB DWG. NO	SOURCE
1	FXD PNL TOP RAIL ✓	2	10001102	10001102-F-01	A
2	STILE ✓	4	10001102	10001102-F-01	A
3	BOTTOM RAIL ✓	2	10001102	10001102-F-02	A
4	INTERLOCK ✓	2	10001117	10001117-F-04	A
5	SCREW COVER ✓	2	10001118	10001118	A
6	GLAZING BEAD ✓	8	10001111	10001111-F-01	A
7	STILE REINFORCEMENT - JAMB ✓	2	10300150	STRAIGHT CUT	PPPP
8	STILE REINFORCEMENT - INTERLOCK ✓	2	10300151	STRAIGHT CUT	PPPP
9	WEATHER-STRIPPING - .270 x .250 ✓	AS REQD	W21255MW	STRAIGHT CUT	HHHH
10					
11	OPR PNL RAIL - TOP ✓	2	10001102	10001102-F-01	A
12	STILE - INTERLOCK ✓	2	10001102	10001102-F-03	A
13	STILE - ACTIVE LOCK ✓	1	10001102	10001102-F-10	A
14	STILE - PASSIVE LOCK ✓	1	10001102	10001102-F-16	A
15	RAIL - BOTTOM ✓	2	10001102	10001102-F-05	A
16	4 LITE ASTRAGAL ✓	1	10001116	10001116-F-01	A
17	INTERLOCK ✓	2	10001117	10001117-F-02	A
18	SCREW COVER ✓	2	10001118	STRAIGHT CUT	A
19	GLAZING BEAD ✓	8	10001111	10001111-F-01	A
20	STILE REINFORCEMENT - INTERLOCK ✓	2	10300151	STRAIGHT CUT	PPPP
21	STILE REINFORCEMENT - ACTIVE LOCK ✓	1	10300150	10300150-F-01	PPPP
22	STILE REINFORCEMENT - PASSIVE LOCK ✓	1	10300151	10300151-F-01	PPPP
23	RAIL REINFORCEMENT - BOTTOM ✓	2	10300152	10300152-F-01	PPPP
24	WEATHER-STRIPPING - .270 x .250 ✓	AS REQD	W21255MW		HHHH
25					
26	MISC LOCK SET ASSEMBLY - 2817 LOCK W/ TRIMPLATE ✓	1	DECU-XXX4		F
27	HANDLE SET ASSEMBLY ✓	2			F
28	HANDLE SET - INTERIOR SWITCH ✓		DECU-XXX1		
29	HANDLE SET - INTERIOR SWITCH / KEY ✓		DECU-XXX2		
30	HANDLE SET - BLANK ✓		DECU-XXX3		
31	ROLLER ASSEMBLY - PRECISION 1.66" WHEEL ✓	4	1988PRS166REVSS		F
32	DRAFT PLUG - .810 DIA. ✓	4	D6096AAMWKC 0.810		HHHH
33	3/8" HOLE PLUG ✓	4	9946		D
34	KEEPER - 2778 KEEPER - STAINLESS STEEL ✓	1	DECU-2808-84		F
35	IMPACT BRACKET ✓	5	0111055-D		MMMM
36	*1 INSULATED GLASS - NOTE ✓	4			
37	SETTING BLOCKS (REFER TO IG SUPPLIER GUIDELINES) ✓	AS REQD			
38	GLAZING COMPOUND ✓	AS REQD			
39					
40	SCREWS LOCK SET ✓	4	#10 x 1.25" PFH - 410SS		
41	ROLLER ASSEMBLY ✓	8	#9 x 3/4" PPH - 410SS		
42	REINFORCEMENT TO PANEL ✓	AS REQD	#9 x 1" PFH - 410SS		
43	INTERLOCK ✓	AS REQD	#8 x 5/8" PPH - 410SS		
44	4 LITE ASTRAGAL ✓	AS REQD	#9 x 2" PPH - PAINTED		
45	KEEPER ✓	4	#9 x 3" PPH - 410SS		
46	IMPACT BRACKET ✓	15	#8 x 2.5" PFH - PAINTED		
47					

NOTE LAMINATED GLASS UTILIZES .090" SOLUTIA PVB

REV	DATE	DESCRIPTION	BY

CONFIDENTIAL
UNPUBLISHED WORK © 2010
DECEUNINCK NORTH AMERICA

deceuninck
NORTH AMERICA

MONROE, OH
000.620 PD - 008
COPYRIGHT 2010

NAME: JGM
DWN BY:
CHKD BY:
DWG NO: 000620PD-008

ELEMENT MATERIALS TECHNOLOGY
1924 Premier Row
Orlando, FL 32809

ESP NO. ESP009160P-A3
Date Verified: 4/20/12
Verified By: [Signature]

THIS DOCUMENT CONTAINS PROPRIETARY AND CONFIDENTIAL INFORMATION. DO NOT COPY OR DISCLOSE THIS INFORMATION WITHOUT THE EXPRESS WRITTEN CONSENT OF DECEUNINCK NORTH AMERICA. DECEUNINCK NORTH AMERICA RESERVES THE RIGHT TO CHANGE THIS DRAWING AND ANY ASSOCIATED DOCUMENTS.

623.000 PD - 004 - BILL OF MATERIALS 3 & 4 LITE

ITEM NO.	DESCRIPTION	QUANTITY	PART NO.	FAB DWG. NO	SOURCE
1	HEAD	1	10001100	10001100-F-01	A
2	JAMB	2	10001100	10001100-F-05	A
3	EXTERIOR FRAME COVER	2	10001104	10001104-F-01	A
4	INTERIOR FRAME COVER	4	10001104	STRAIGHT CUT	A
5	SILL	1	10001101	10001101-F-01	A
6	SILL THRESHOLD	1	10300171	10300171-F-01	PPPP
7	SILL RISER	2	10001105	10001105-F-01	A
8	WEATHER-STRIPPING - 270 x .250	AS REQD	W21255MW		HHHH
9	MISC				
10	SNUBBER	6	10300148	10300148-F-01	PPPP
11	ROLLER TRACK CAP	1	1A16719	STRAIGHT CUT	N
12	L - BRACKET	4	011H027		LLLL
13	SILL FRAME GASKET	2	GA302-Z1-G600		CC
14	FRAME REINFORCEMENT	4	10300149	STRAIGHT CUT	PPPP
15	KEEPER	1			F
16	2778 KEEPER - YZD MILD STEEL		DECU-2808-00		DDDD
17	2778 KEEPER - STAINLESS STEEL		DECU-2808-84		DDDD
18	T - BRACKET	1 OR 2	10300213		MMMM
19	SCREEN KEEPER	1	011H040		MMMM
20	BUMPER STOP	2 OR 4	2152.525		F
21	SCREWS				
22	SNUBBER	36	#8 x 1.25" PFH - 410SS		
23	L - BRACKET - SASH	8	#8 x 1" PFH - 410SS		
24	L - BRACKET - HEAD	8	#8 x 0.75" PFH - 410SS		
25	L - BRACKET - HEAD	8	#8 x 2.5" PFH - 410SS		
26	SILL RISER	4	#8 x 1.25" PFH - 410SS		
27	FRAME ASSEMBLY	12	#8 x 2.5" PFH - 410SS		
28	SCREEN KEEPER	2	#6 x .375" PPH		
29	T - BRACKET	8 OR 16	#8 x 2.5" PFH - 410SS		
30					
31					

ELEMENT MATERIALS TECHNOLOGY

1924 Premier Row
Orlando, FL 32809

ESP NO. _____
Date Verified: 4/26/12
Verified By: _____

REV	DATE	DESCRIPTION	BY

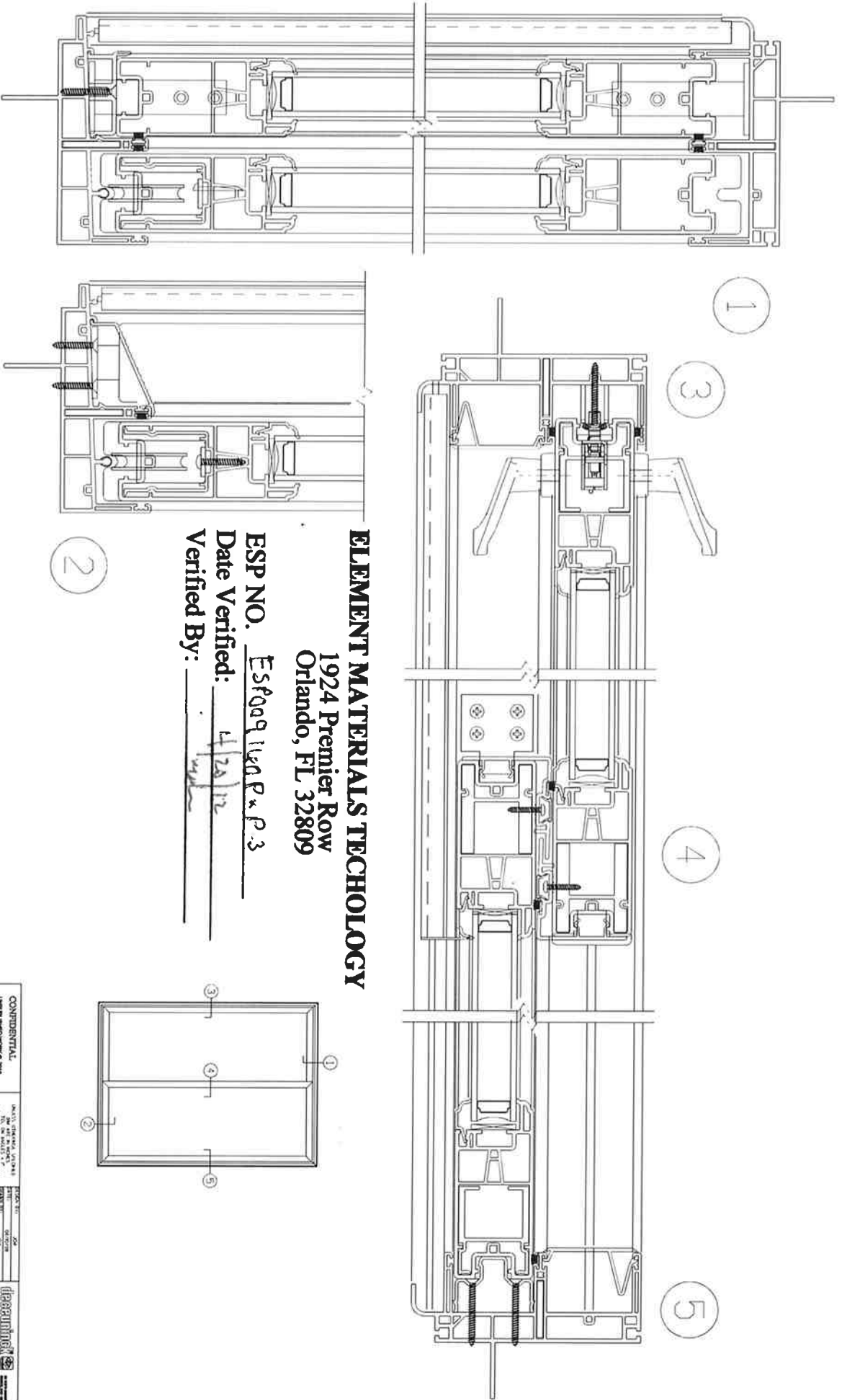
CONFIDENTIAL
 UNPUBLISHED WORK © 2010
 DECEUNINCK NORTH AMERICA

MONROE, OH
 623.000 PD - 004
 JGM
 623000PD-004
 COPYRIGHT 2010

THIS DOCUMENT CONTAINS PROPRIETARY AND CONFIDENTIAL INFORMATION. DO NOT COPY OR DISCLOSE THIS INFORMATION WITHOUT THE EXPRESS WRITTEN CONSENT OF DECEUNINCK NORTH AMERICA. DECEUNINCK NORTH AMERICA RESERVES THE RIGHT TO CHANGE THIS DRAWING AND ANY ASSOCIATED DOCUMENTS.

CGO MANTON'S TRINGS SHALL BE
 REPRESENTED BY THE 553A ASSEMBLY.

DATE	REVISED	BY	APPROVED



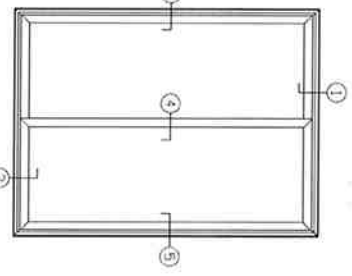
ELEMENT MATERIALS TECHNOLOGY

1924 Premier Row
 Orlando, FL 32809

ESP NO. ESF0091140 P x P 3

Date Verified: 4/29/12

Verified By: [Signature]



CONFIDENTIAL

UNLESS OTHERWISE SPECIFIED, ALL DIMENSIONS ARE IN INCHES AND DECIMALS THEREOF. DIMENSIONS IN PARENTHESIS ARE ALTERNATE DIMENSIONS. DIMENSIONS IN PARENTHESIS ARE TO BE USED ONLY IN THE EVENT OF A DISCREPANCY BETWEEN THE DIMENSIONS SHOWN ON THIS DRAWING AND THE DIMENSIONS SHOWN ON THE DRAWING OF THE PART TO WHICH THIS DRAWING APPLIES.

DATE: 01/20/12

REVISED: 01/20/12

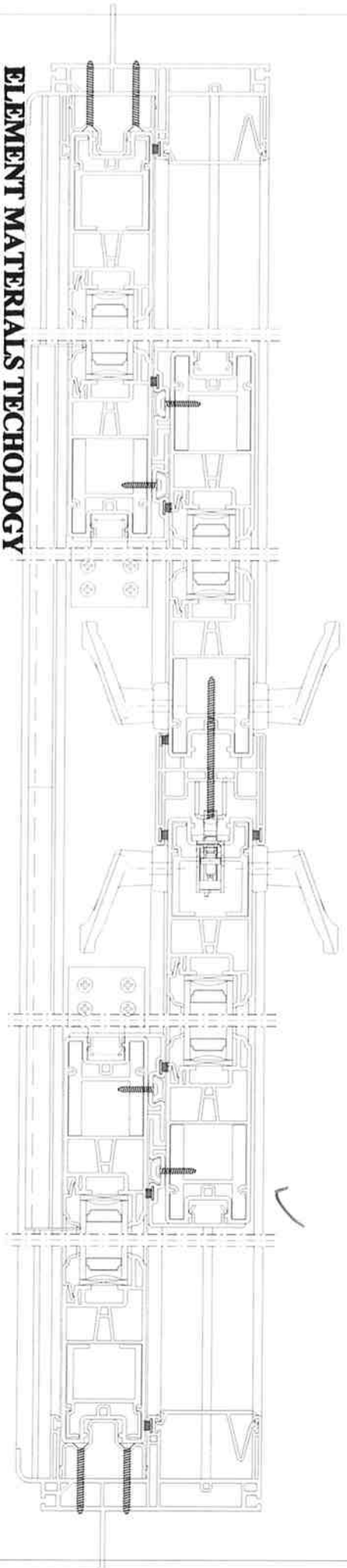
BY: [Signature]

APPROVED: [Signature]

623,620 PD - 003

Element Materials Technology

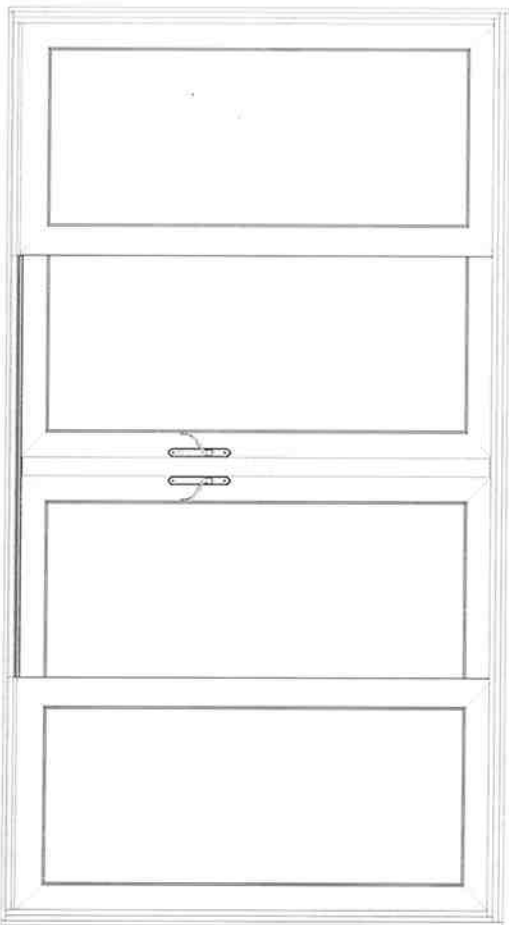
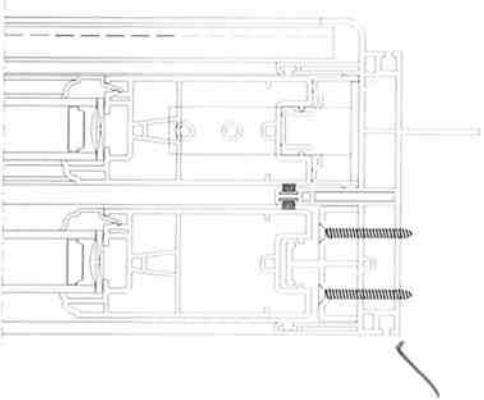
ALL DIMENSIONS SHALL BE
AS SHOWN UNLESS OTHERWISE NOTED.



ELEMENT MATERIALS TECHNOLOGY

1924 Premier Row
Orlando, FL 32809

ESP NO. ESP09140 P & P-3
Date Verified: 4/20/12
Verified By: Walt



CONFIDENTIAL
MANUFACTURED WORKS OF ARTS
RECOMMENDATIONS

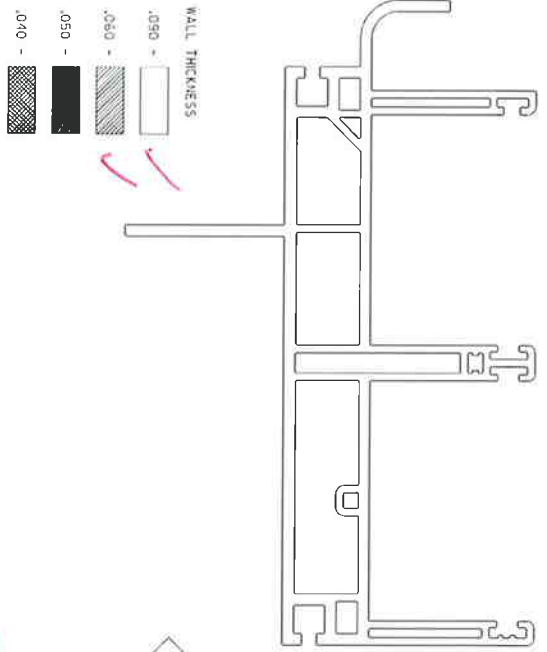
DATE: 04/20/12
BY: WALT
PROJECT: 1924 PREMIER ROW
ADDRESS: 1924 PREMIER ROW
ORLANDO, FL 32809

ESP NO. ESP09140 P & P-3
DATE VERIFIED: 4/20/12
VERIFIED BY: WALT

MANUFACTURED WORKS OF ARTS
1000 WEST 17TH AVENUE
SUITE 100
DENVER, CO 80202
TEL: 303.733.1100
WWW.MANUFACTUREDWORKSOFARTS.COM

CAD MAINTAINED. CHANGES SHALL BE INCORPORATED BY THE DESIGN ACTIVITY.

REVISION HISTORY			
REV	DESCRIPTION	DATE	APPROVED
L	REMOVED INTERIOR M.S.S. DIMENSIONS	10/05/26	DMG

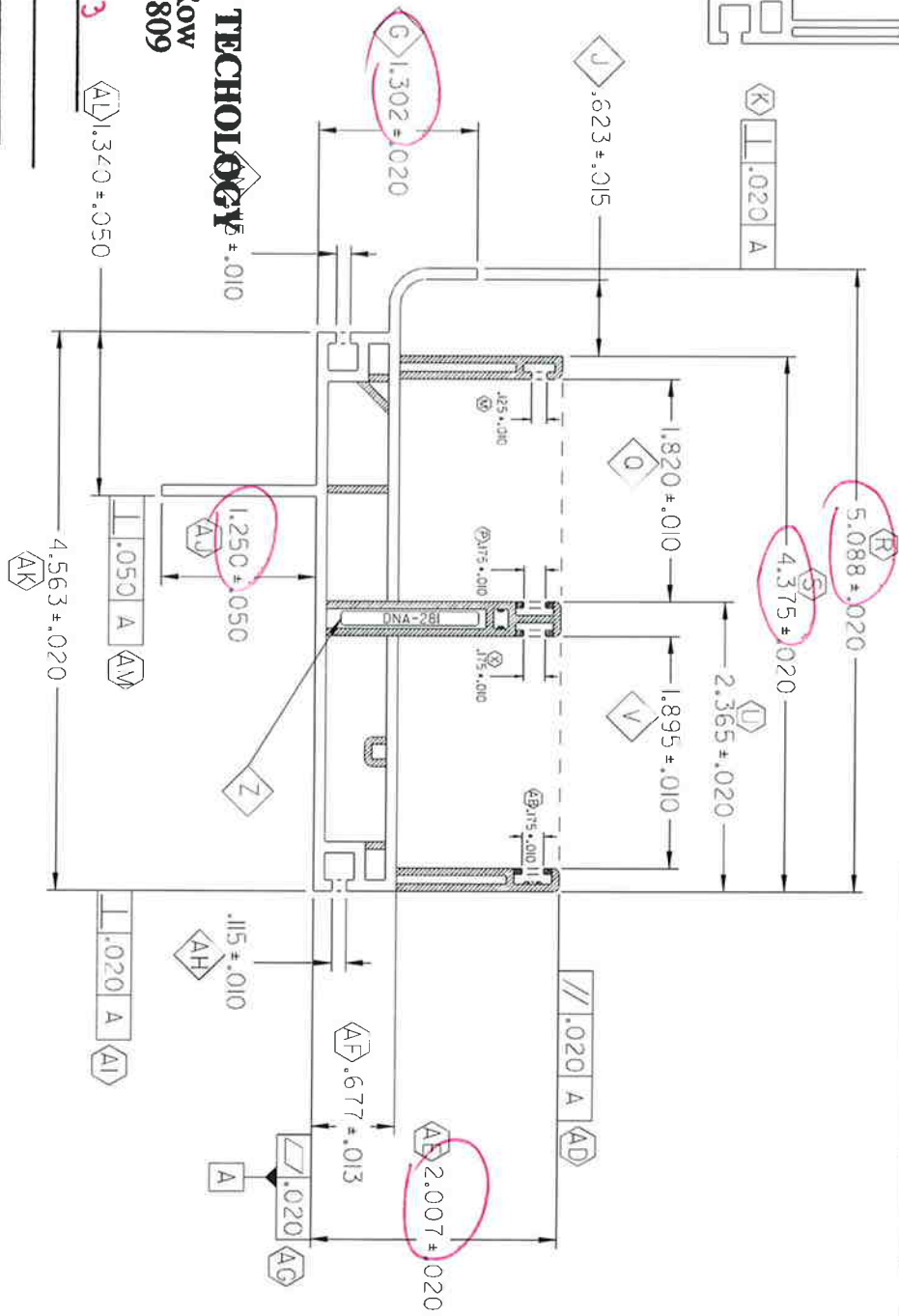


KEY PRODUCT CHARACTERISTICS

G	DIMENSION 1.262 - 1.322
J	DIMENSION .609 - .638
C	DIMENSION 1.810 - 1.870
V	DIMENSION 1.865 - 1.905
Z	GAUGE DNA-281
AH	DIMENSION .105 - .125
AN	DIMENSION .105 - .125

ELEMENT MATERIALS TECHNOLOGY
 1924 Premier Row
 Orlando, FL 32809

ESP NO. *ESP0091160 P.P.3*
 Date Verified: *4/26/12*
 Verified By: *Wine*



- NOTES:
- STANDARD STRAIGHTNESS CLASS A AND LENGTH TOLERANCES APPLY (A)
 - INTERPRET ALL TOLERANCE APPLICATIONS PER STANDARD (B)
 - UNSPECIFIED EXTERNAL RADIUS = .XXX +.010 / -.005 (C)
 - UNSPECIFIED INTERNAL RADIUS = .XXX +.020 / -.005 (D)
 - UNSPECIFIED EXTERNAL WALL THICKNESS = .XXX +/- 10% (E)
 - UNSPECIFIED INTERNAL WALL THICKNESS = .XXX +/- 20% (E)

CONFIDENTIAL
 UNPUBLISHED WORK © 2010
 DECEUNINCK NORTH AMERICA

THIS DOCUMENT CONTAINS PROPRIETARY AND CONFIDENTIAL INFORMATION. DO NOT COPY OR DISCLOSE THIS INFORMATION WITHOUT THE EXPRESS WRITTEN CONSENT OF DECEUNINCK NORTH AMERICA. ANY CHANGE TO THIS DRAWING AND ANY ASSOCIATED DOCUMENTS.

UNLESS OTHERWISE SPECIFIED DIM ARE IN INCHES
 TOL. ON ANGLES: P
 2 PL: 0.010 3 PL: 0.005
 INTERFERE DIM AND TOL PER ASME Y14.5M - 1994

THIRD ANGLE PROJECTION

DESIGN BY:	DATE:
CTC	05/03/30
DRAWN BY:	DATE:
CTC	05/03/30
AUTH:	DATE:
FILENAME:	DATE:
99948	

deceuninck
 NORTH AMERICA

381 Northgate Road
 Monroe, LA 70602

MAIN FRAME - PD

SCALE: 1:1
 SHEET: 1 OF 1

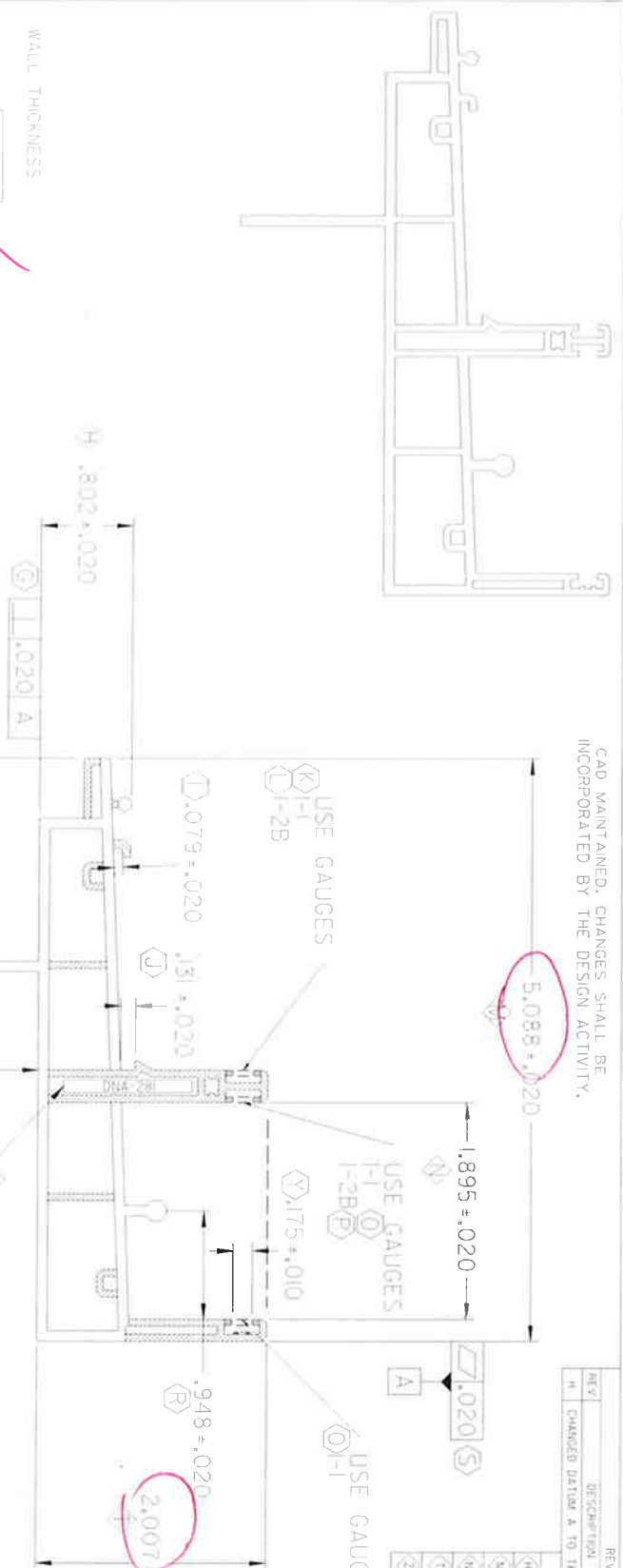
CAD MAINTAINED. CHANGES SHALL BE INCORPORATED BY THE DESIGN ACTIVITY.

REVISION HISTORY

REV	DESCRIPTION	DATE	APPROVED
H	CHANGED DATUM A TO THE SIDE	1/05/05	BMB

REF PRODUCT CHARACTERISTICS

①	DIMENSION	.782 - .822
②	DIMENSION	5.068 - 5.108
③	DIMENSION	1.875 - 1.915
④	DIMENSION	1.987 - 2.207
⑤	GAUGE	DNA-281



WALL THICKNESS

.090 -	
.070 -	
.060 -	
.050 -	
.040 -	

- NOTES:
1. STANDARD: STRAIGHTNESS CLASS A AND LENGTH TOLERANCES APPLY
 2. INTERPRET ALL TOLERANCE APPLICATIONS PER STANDARD
 3. UNSPECIFIED EXTERNAL RADIUS = .005
 4. UNSPECIFIED INTERNAL RADIUS = .005
 5. UNSPECIFIED EXTERNAL WALL THICKNESS = .XXX +/- .020
 6. UNSPECIFIED INTERNAL WALL THICKNESS = .XXX +/- .020

CONFIDENTIAL
UNPUBLISHED WORK © 2011
DECEUNNICK NORTH AMERICA

THIS DOCUMENT CONTAINS PROPRIETARY AND CONFIDENTIAL INFORMATION. DO NOT COPY OR DISCLOSE THIS INFORMATION WITHOUT THE EXPRESS WRITTEN CONSENT OF DECEUNNICK NORTH AMERICA. DECEUNNICK NORTH AMERICA RESERVES THE RIGHT TO CHANGE THIS DRAWING AND ANY ASSOCIATED DOCUMENTS.

UNLESS OTHERWISE SPECIFIED
DIM ARE IN INCHES
2 PL. 0.010 3 PL. 0.005
INTERPRET DIM AND TOL PER
ASME Y14.5M - 1994

THIRD ANGLE PROJECTION

DESIGN BY:	DATE:
DATE:	00/00/00
DATE:	00/00/00
DATE:	00/00/00
DATE:	00/00/00

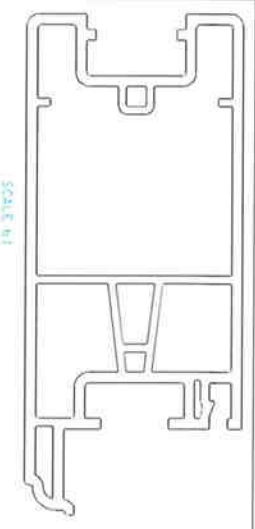
deceunnick  31 North Calumet Road
North America
SILF FRAME - PD

TITLE BLOCK: 1000004.S41 SHEET: 1 OF 1

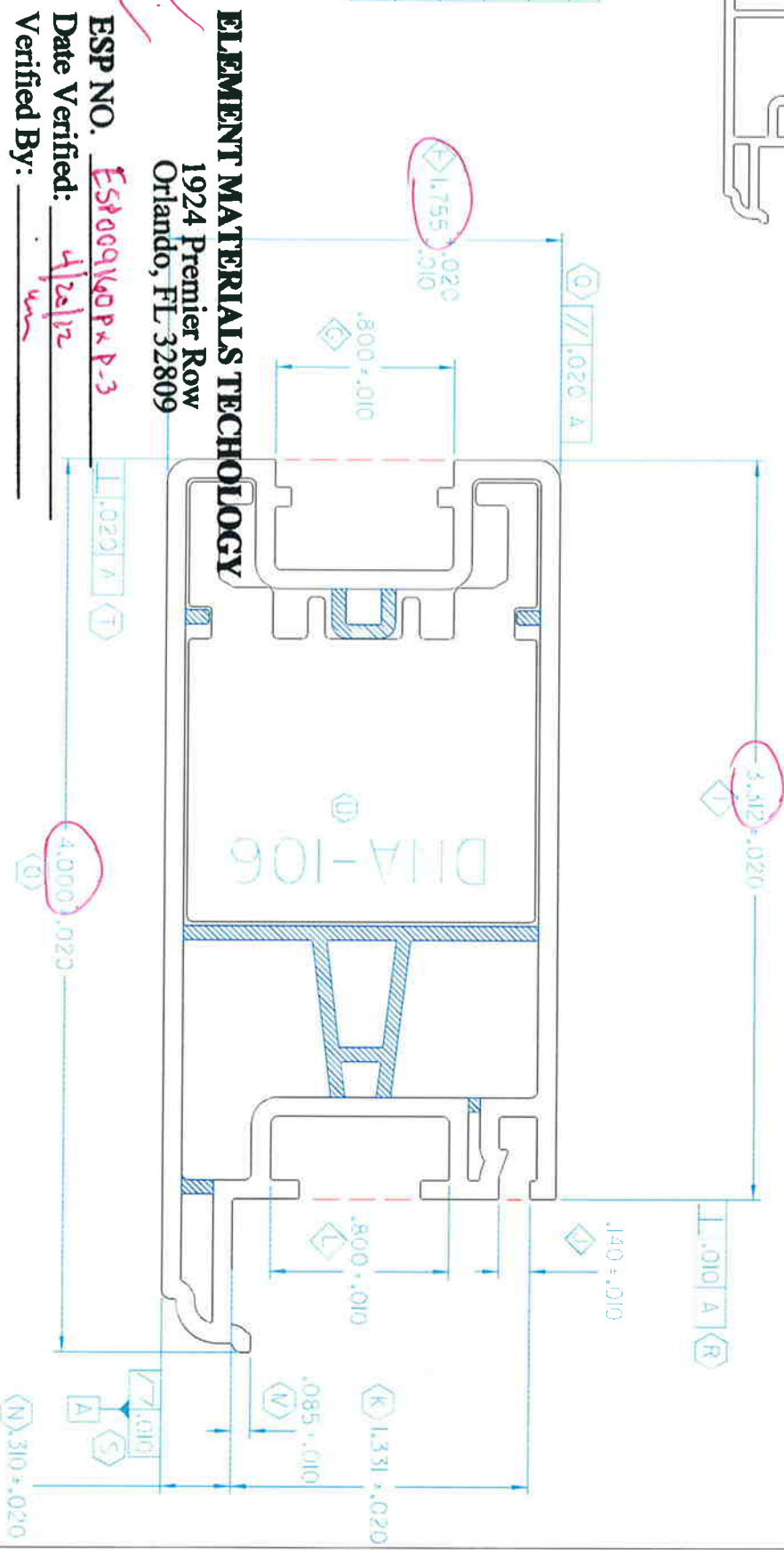
ELEMENT MATERIALS TECHNOLOGY
1924 Premier Row
Orlando, FL 32809

ESP NO. ESP009160 P&P-3
Date Verified: 4/29/12
Verified By: [Signature]

CALL MAINTAINED. CHANGES SHALL BE INCORPORATED BY THE DESIGN ACTIVITIES.



KEY PRODUCT CHARACTERISTICS	
G	DIMENSION: .750 +/- .010
H	DIMENSION: 1.745 +/- 1.775
I	DIMENSION: 3.892 +/- 3.932
J	DIMENSION: .450 +/- .450
L	DIMENSION: .750 +/- .010



ELEMENT MATERIALS TECHNOLOGY

1924 Premier Row
Orlando, FL 32809

ESP NO. *ESP009160P x P-3*
Date Verified: *4/26/12*
Verified By: *[Signature]*

- NOTES:
1. STUDY/DRAWING'S DIMENSIONS CLASS B AND LENGTH TOLERANCES APPLY (A)
 2. INTERPRET ALL TOLERANCE APPLICATIONS PER STD00013 (B)
 3. UNSPECIFIED EXTERNAL RADIUS = .XXX +/- .010 +/- -.005 (C)
 4. UNSPECIFIED INTERNAL RADIUS = .XXX +/- .020 +/- -.005 (D)
 5. UNSPECIFIED EXTERNAL WALL THICKNESS = .XXX +/- .10% (E)
 6. UNSPECIFIED INTERNAL WALL THICKNESS = .XXX +/- .20% (F)

CONFIDENTIAL
UNPUBLISHED WORK © 2008
DECEUNINCK NORTH AMERICA

INVEST ORIGINATING SPECIFIC DRAWING BY PROJECT TO QUAL ANALYSIS AND 2-1/2" DIA. 3/16" ± 0.015" ATTEMPT DIV AND 10% PER ASME Y14.4M - 1994

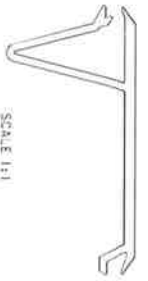
REVISION	DATE	BY	CHKD
1	04/26/12	[Signature]	[Signature]
2	04/26/12	[Signature]	[Signature]
3	04/26/12	[Signature]	[Signature]

deceuninck **IN NORTH AMERICA**

MAIN SASH *PD*

REV: 0
DATE: 4/26/12
BY: [Signature]
CHKD: [Signature]

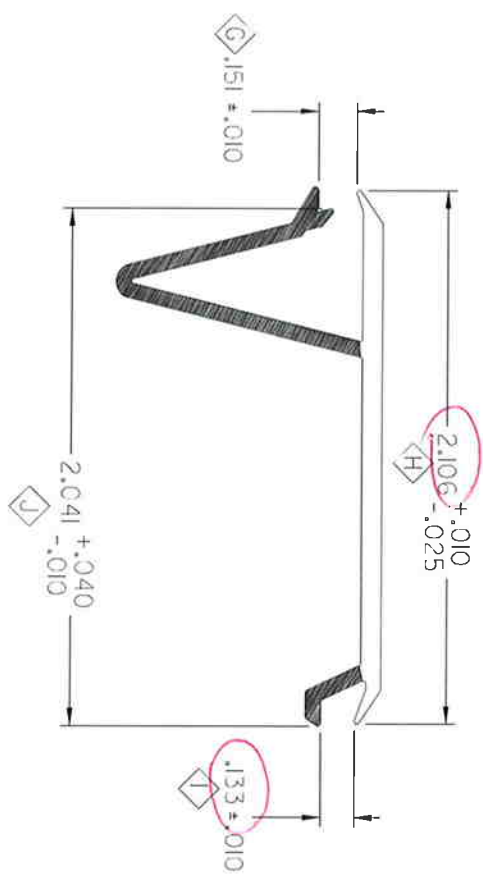
REV	DESCRIPTION	DATE	APPROVED
1	INITIAL ISSUE	3/16/07/06	[Signature]



SCALE 1:1

CAD MAINTAINED. CHANGES SHALL BE INCORPORATED BY THE DESIGN ACTIVITY
ELEMENT MATERIALS TECHNOLOGY
 1924 Premier Row
 Orlando, FL 32809

ESP NO. ESP0091100P & P-3
 Date Verified: 4/24/12
 Verified By: [Signature]



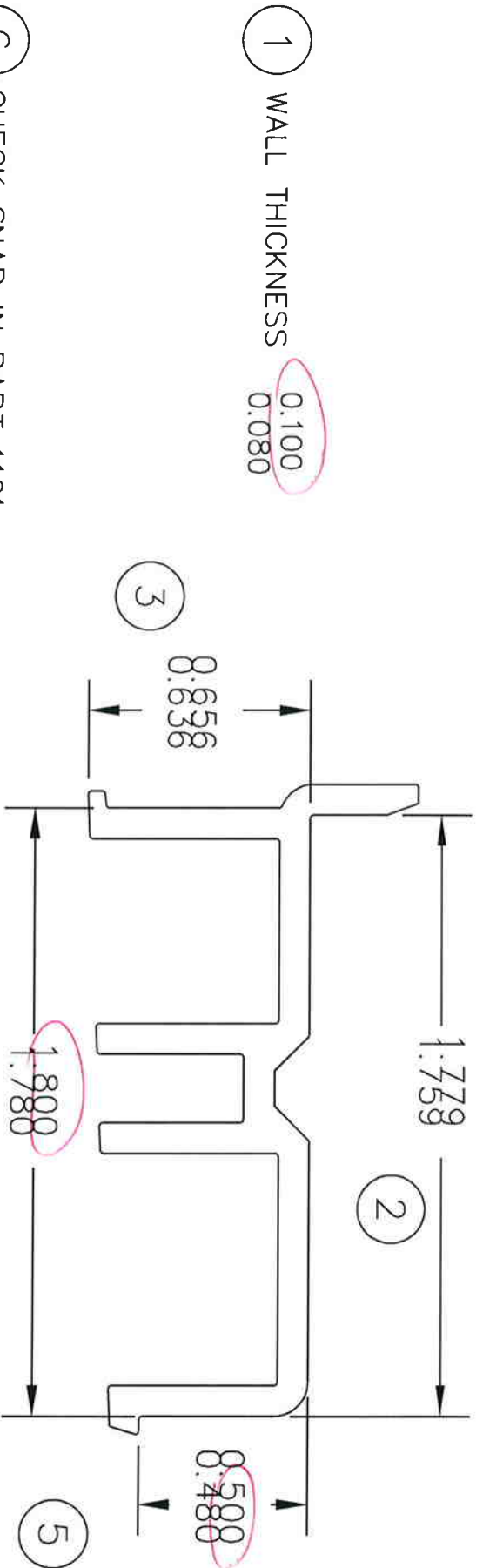
WALL THICKNESS
 .080 -
 .060 -

- NOTES:
1. "STOODONLY" STRAIGHTNESS CLASS E AND LENGTH TOLERANCES APPLY (D)
 2. INTERPRET ALL TOLERANCE APPLICATIONS PER STOD00013(B)
 3. UNSPECIFIED EXTERNAL RADI = .XXX +.010 / -.005 (D)
 4. UNSPECIFIED INTERNAL RADI = .XXX +.020 / -.005 (D)
 5. UNSPECIFIED EXTERNAL WALL THICKNESS = .XXX +/- .002 (E)
 6. UNSPECIFIED INTERNAL WALL THICKNESS = .XXX +/- .002 (E)

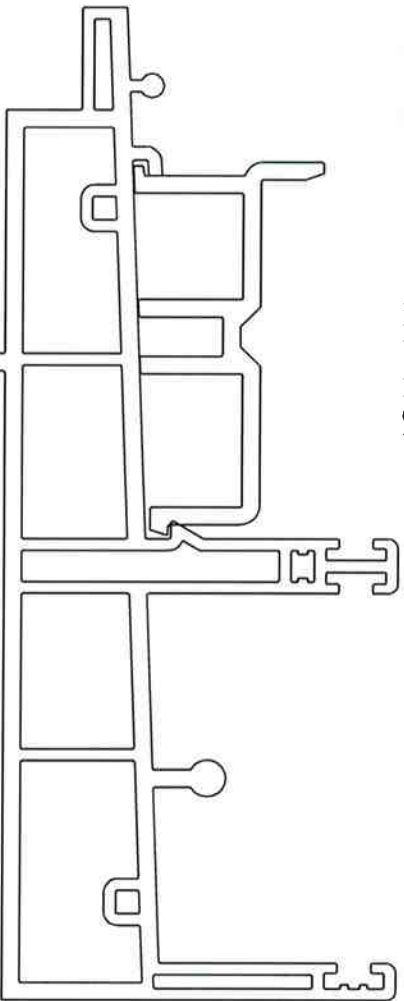
CONFIDENTIAL		UNLESS OTHERWISE SPECIFIED DIM ARE IN INCHES	
UNPUBLISHED WORK © 2010 DECEUNINCK NORTH AMERICA		2 PL. • 0.00" 5 PL. • 0.005" INTERPRET DIM AND TOL PER ASME Y14.5M - 1994	
THIS DOCUMENT CONTAINS PROPRIETARY AND CONFIDENTIAL INFORMATION. DO NOT COPY OR DISCLOSE THIS INFORMATION WITHOUT THE EXPRESS WRITTEN CONSENT OF DECEUNINCK NORTH AMERICA. DECEUNINCK NORTH AMERICA RESERVES THE RIGHT TO CHANGE THIS DRAWING AND ANY ASSOCIATED DOCUMENTS.		THIRD ANGLE PROJECTION	
DESIGN BY: CTC	DATE: 05/11/14	DATE: 05/11/14	DATE:
DRAWN BY: CTC	DATE:	DATE:	DATE:
DATE:	DATE:	DATE:	DATE:
FILENAME: 102126	SIZE PRIC. NO: B	100C104.SH	REV: 0
deceuninck NORTH AMERICA		FRAME ADAPTOR	
SCALE: 2:1		SHEET: 1 OF 1	FILE: \$

REV	DESCRIPTION	DATE	APPROVED
0	KPC	10/08/25	DMG

KEY PRODUCT CHARACTERISTICS	
C	DIMENSION .141 - .161
H	DIMENSION 2.081 - 2.116
I	DIMENSION .123 - .143
J	DIMENSION 2.031 - 2.081



6 CHECK SNAP IN PART 1101



ELEMENT MATERIALS TECHNOLOGY
 1924 Premier Row
 Orlando, FL 32809

ESP NO. ESP009160 Pa.P.3
 Date Verified: 4/20/12
 Verified By: [Signature]



Deceuninck® NORTH AMERICA/Oakland N.J.
 AREA=
 TOTAL WEIGHT=
 TOL: ±0.010
 FILENAME:
 path

BY DATE MATL SCALE
 CTC 11/14/05 PVC 2:1

SILL INSERT

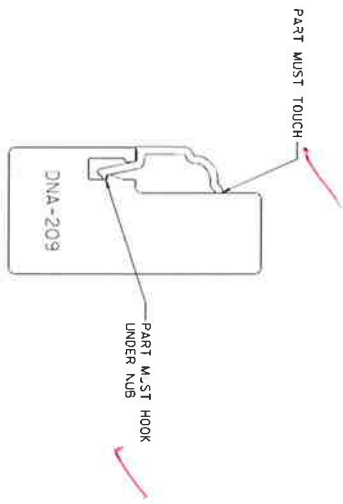
REV	BY	APPVD	DATE	CHANGE

10001105_SH

CAD MAINTAINED. CHANGES SHALL BE INCORPORATED BY THE DESIGN ACTIVITY.

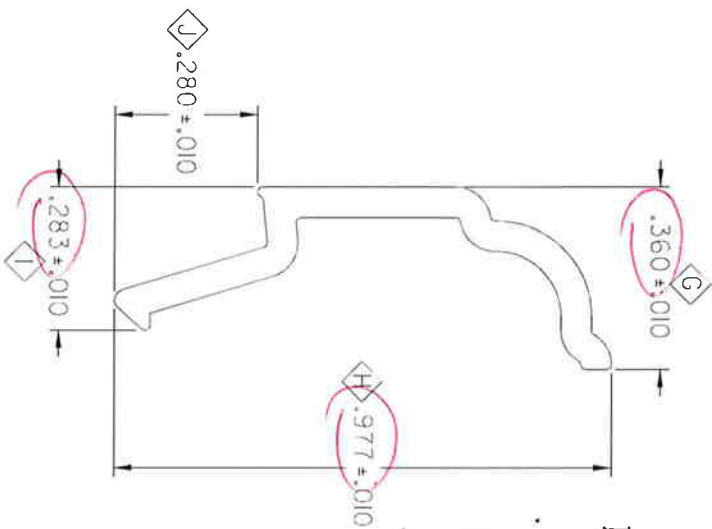


SCALE 1:1



SLIDE PART INTO GAUGE FROM THE ENG. PART WILL NOT SHOW INTO GAUGE

WALL THICKNESS
 .060 -



USE MYLAR 1000III OP REV D

REVISION HISTORY			
REV	DESCRIPTION	DATE	APPROVED
E	CHANGED MYLAR		

KEY PRODUCT CHARACTERISTICS			
CHARACTERISTIC	NO.	REV.	DATE
G	GAUGE	DNA-209	
H	GAUGE	DNA-209	
I	GAUGE	DNA-209	
J	GAUGE	DNA-209	

ELEMENTI METEOR
 1924 Premier
 Orlando, FL 32809

ESP NO. ESP009160P * R-3
 Date Verified: 4/26/12
 Verified By: [Signature]

- NOTES:
1. 'STOOD003' STRAIGHTNESS CLASS A AND LENGTH TOLERANCES APPLY (Z)
 2. INTERPRET ALL TOLERANCE APPLICATIONS PER STOOD003 (B)
 3. UNSPECIFIED EXTERNAL RADI = .XXX +.010 / -.005 (D)
 4. UNSPECIFIED INTERNAL RADI = .XXX +.020 / -.005 (D)
 5. UNSPECIFIED EXTERNAL WALL THICKNESS = .XXX +/- .20% (E)
 6. UNSPECIFIED INTERNAL WALL THICKNESS = .XXX +/- .20% (E)

CONFIDENTIAL
 UNPUBLISHED WORK © 2010
 DECEUNINCK NORTH AMERICA

UNLESS OTHERWISE SPECIFIED DIM ARE IN INCHES
 2 PL. ± 0.10° 3 PL. ± 0.005°
 INTERPRET DIM AND TOL PER
 ASME Y14.5M - 1994

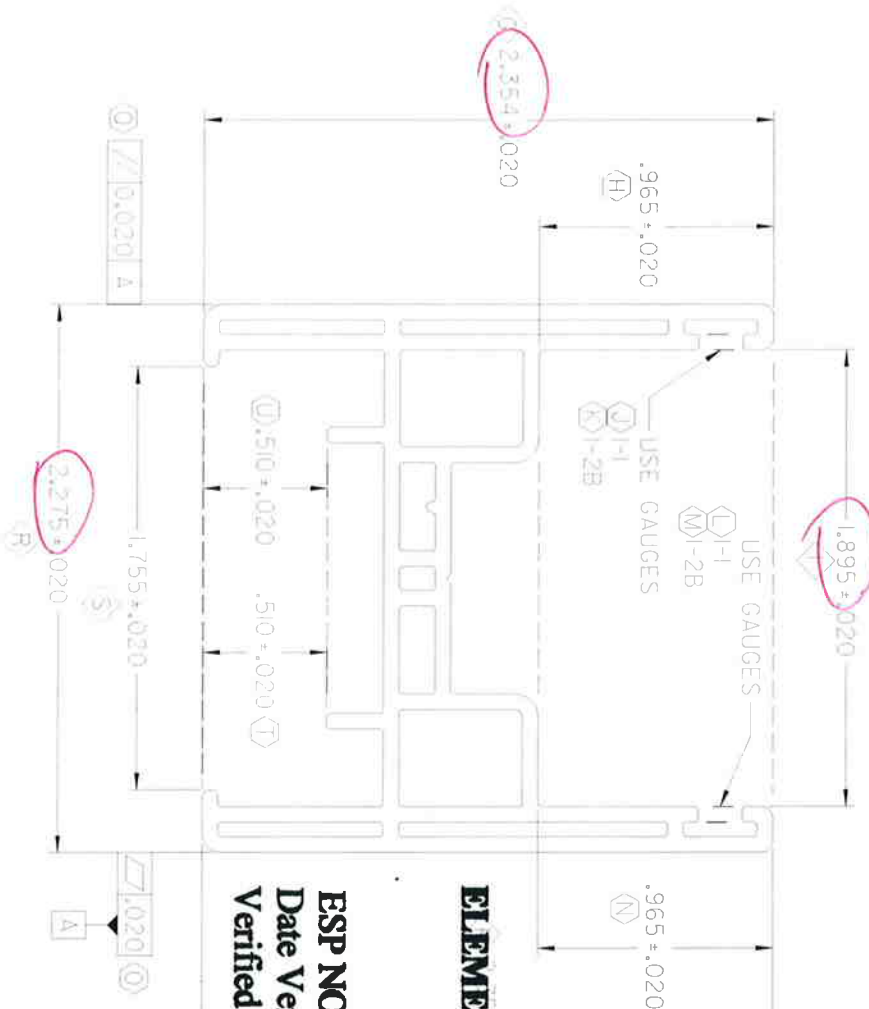
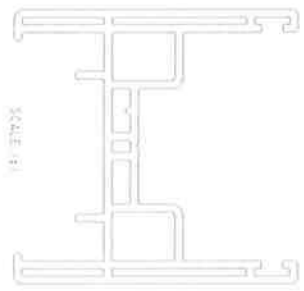
DESIGN BY:	MC
DATE:	00/12/01
DRAWN BY:	MC
DATE:	00/12/01

deceuninck 31 NORTH QUINCY ROAD
 NORTH AMERICA WILMINGTON, OH 45390

GLAZING BEAD

SIZE: **B** PART NO.: 1000III SH
 SCALE: 4:1 THICK: .049 SHEET: E

CAD MAINTAINED. CHANGES SHALL BE INCORPORATED BY THE DESIGN ACTIVITY.



REVISION HISTORY			
REV	DESCRIPTION	DATE	APPROVED
C	KPC	10/08/27	BMS

KEY PRODUCT CHARACTERISTICS	
G	DIMENSION 2.334 - 2.374
I	DIMENSION 1.875 - 1.915
P	DIMENSION 2.334 - 2.374
R	DIMENSION 2.255 - 2.295
S	DIMENSION 1.735 - 1.775

ELEMENT MATERIALS TECHNOLOGY
 1924 Premier Row
 Orlando, FL 32809

ESP NO. ESP009160 P-R-3
 Date Verified: 4/24/12
 Verified By: [Signature]

- NOTES:
1. 'STD00013' STRAIGHTNESS, CLASS C AND LENGTH TOLERANCES APPL (A)
 2. INTERPRET ALL TOLERANCE APPLICATIONS PER STD00013 (B)
 3. UNSPECIFIED EXTERNAL RADII = .XXX +.010 / -.005 (C)
 4. UNSPECIFIED INTERNAL RADII = .XXX +.020 / -.005 (D)
 5. UNSPECIFIED EXTERNAL WALL THICKNESS = .XXX +/- .02 (E)
 6. UNSPECIFIED INTERNAL WALL THICKNESS = .XXX +/- .20 (F)

CONFIDENTIAL
 UNPUBLISHED WORK © 2010
 DECEUNICK NORTH AMERICA

THIS DOCUMENT CONTAINS PROPRIETARY AND CONFIDENTIAL INFORMATION. DO NOT COPY OR DISCLOSE THIS INFORMATION WITHOUT THE EXPRESS WRITTEN CONSENT OF DECEUNICK NORTH AMERICA. DECEUNICK NORTH AMERICA RESERVES THE RIGHT TO CHANGE THIS DRAWING AND ANY ASSOCIATED DOCUMENTS.

CHECKS, OFFERANCE, VERIFIED	
DATE	BY
05/09/14	CTC

THIRD ANGLE PROJECTION	
DATE	BY
05/09/14	CTC

deceunick NORTH AMERICA

SASH ADAPTOR

009086.SSH

DATE: 10/27/11

REV: C

CAD MAINTAINED. CHANGES SHALL BE INCORPORATED BY THE DESIGN ACTIVITY.

ELEMENT MATERIALS TECHNOLOGY

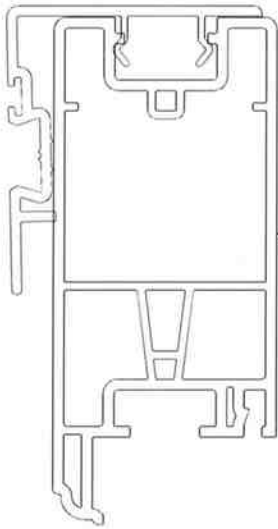
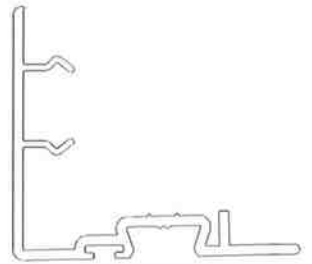
1924 Premier Row
Orlando, FL 32809

ESP NO. ESP009100 P&P.3

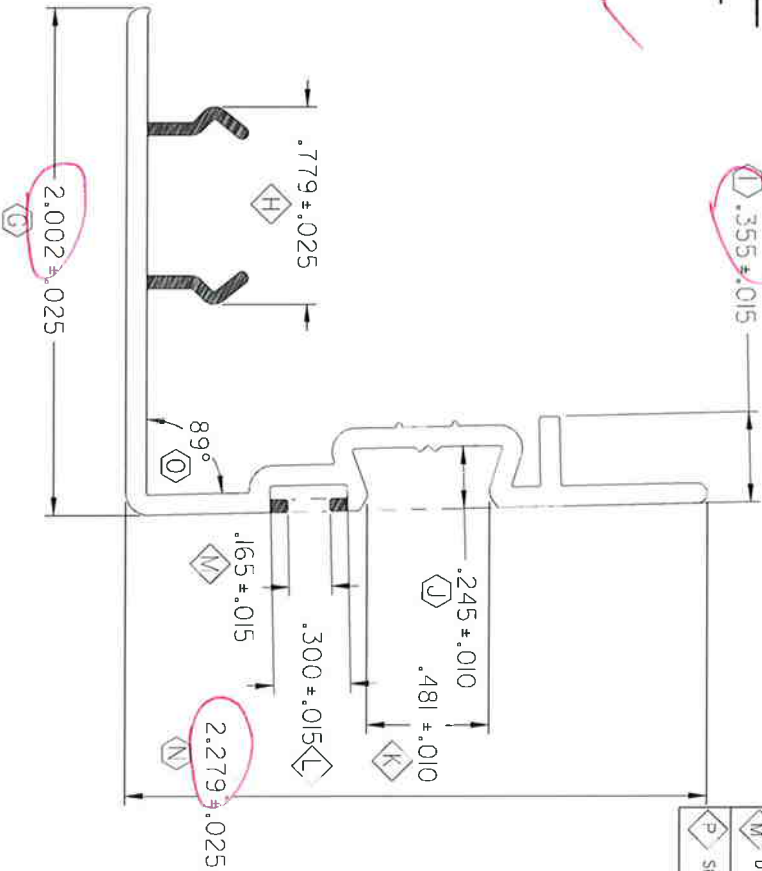
Date Verified: 4/20/12

Verified By: _____

SCALE 1:1



CHECK SNAP CONDITION WITH PART 10001102



REVISION HISTORY			
REV	DESCRIPTION	DATE	APPROVED
E	KPC	10/08/27	DWG

KEY PRODUCT CHARACTERISTICS	
H	DIMENSION .754 - .804
K	DIMENSION .471 - .491
L	DIMENSION .285 - .315
M	DIMENSION .150 - .180
P	SNAP CONDITION

- NOTES:
1. STOODOUT STRAIGHTNESS CLASS A AND LENGTH TOLERANCES APPLY
 2. INTERPRET ALL TOLERANCE APPLICATIONS PER STOODOUTS
 3. UNSPECIFIED EXTERNAL RADIUS = .XXX ±.010 / -.005
 4. UNSPECIFIED INTERNAL RADIUS = .XXX ±.020 / -.005
 5. UNSPECIFIED EXTERNAL WALL THICKNESS = .XXX +/- .002
 6. UNSPECIFIED INTERNAL WALL THICKNESS = .XXX +/- .002

CONFIDENTIAL
UNPUBLISHED WORK © 2010
DECEUNINCK NORTH AMERICA

UNLESS OTHERWISE SPECIFIED DIM ARE IN INCHES
TOL ON ANGLES ± 1°
2 PL: ± 0.010° 3 PL: ± 0.005°
INTERPRET DIM AND TOL PER
ASME Y14.5M - 1994

DATE	BY	DATE	BY
06/12/22	JHM	07/01/02	

decauninck
NORTH AMERICA

SASH ADAPTER

10001102

SCALE: 2:1

SHEET: 1 OF 1

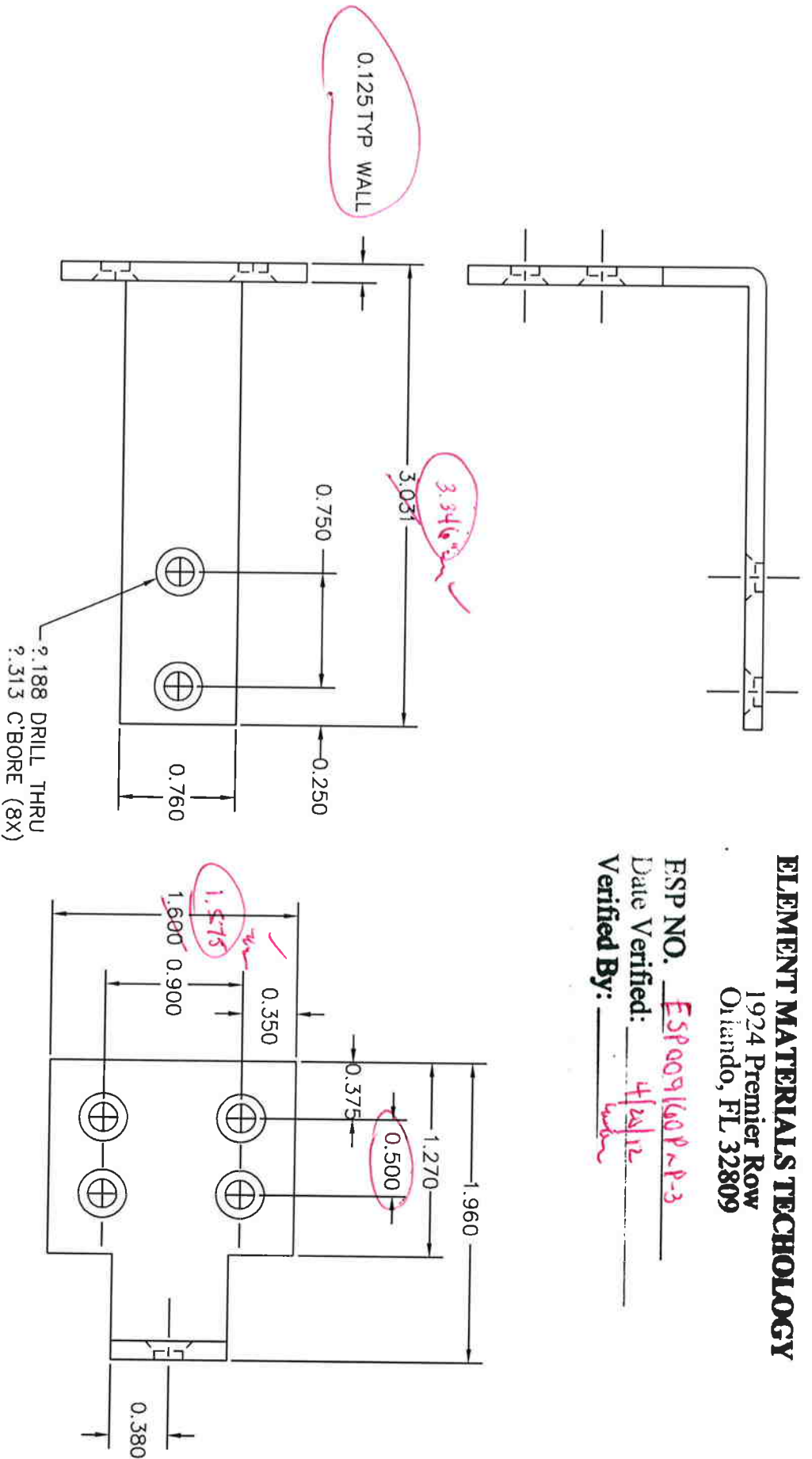
ELEMENT MATERIALS TECHNOLOGY

1924 Premier Row
Orlando, FL 32809

ESP NO. ESP0091600 P-R-3

Date Verified: 4/24/12

Verified By: [Signature]



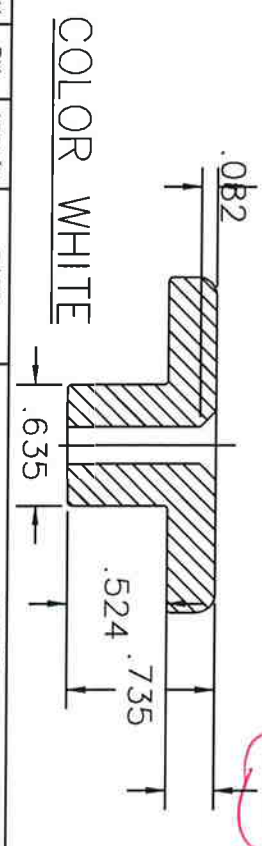
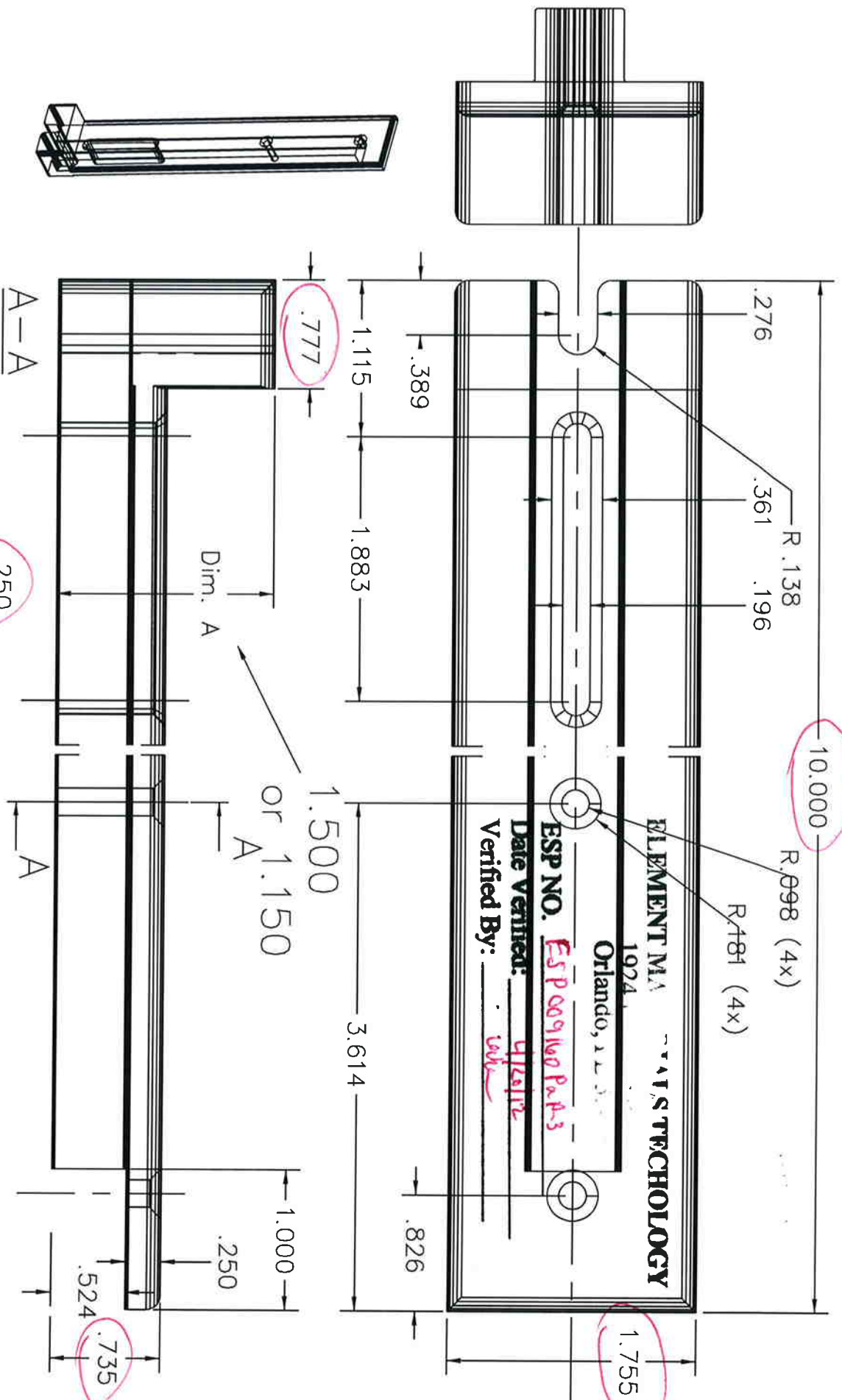
VINYL BUILDING PRODUCTS INC.
TOLERANCES (EXCEPT AS NOTED)
±0.010

DRAWN	MG	DATE	10/29/01	APPV'D	MAT'L	6063-T6	SCALE	1/1
BRACKET				011H027				

REV	BY	APPV'D	DATE	CHANGE
-----	----	--------	------	--------

THIS MATERIAL IS PROPRIETARY & CONFIDENTIAL TO VINYL BUILDING PRODUCTS INC. & SHALL NOT BE REPRODUCED, COPIED OR DISSEMINATED WITHOUT THE EXPRESSED WRITTEN PERMISSION OF VINYL BUILDING PRODUCTS INCORPORATED.

A 011h055-D

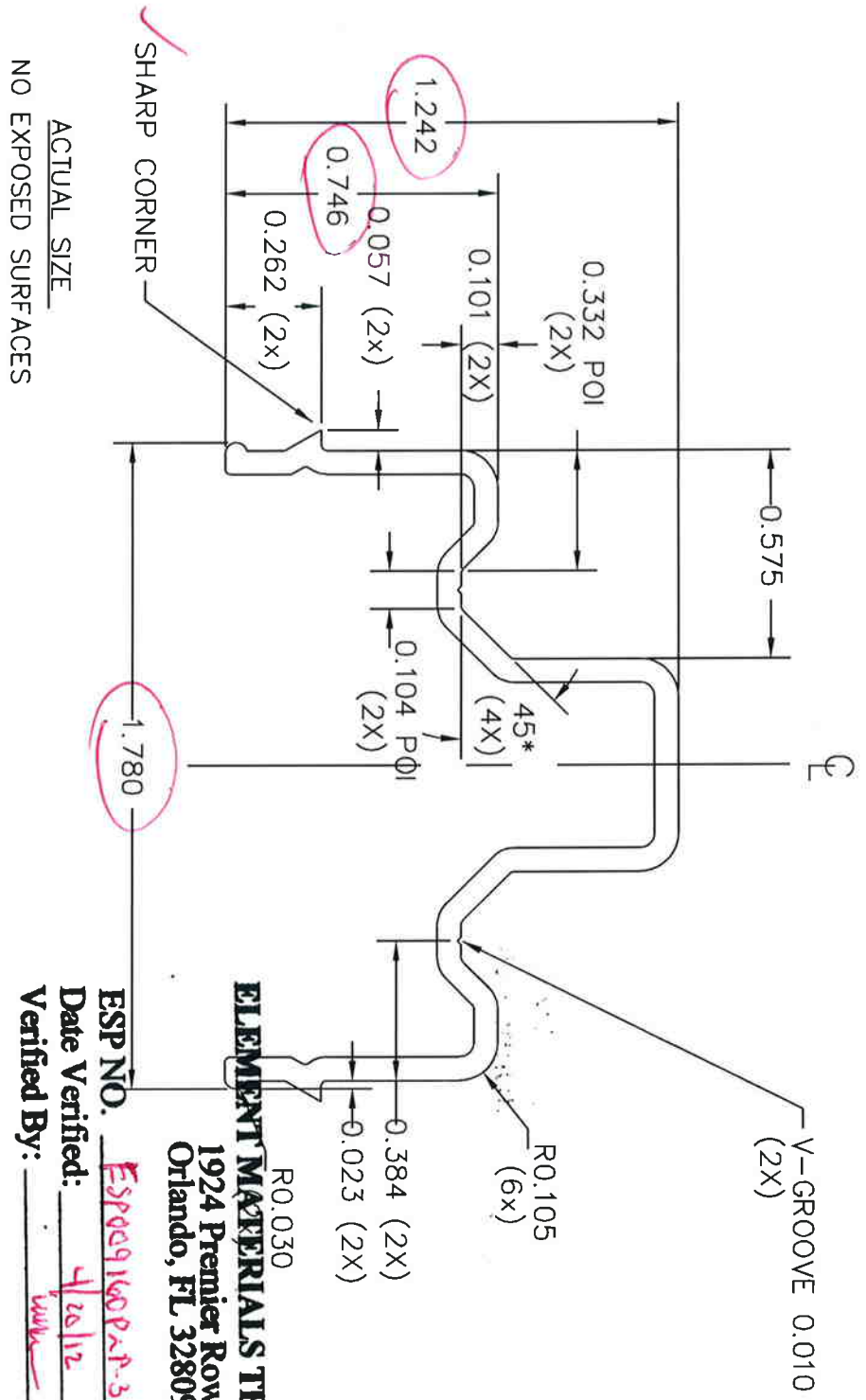


REV	BY	APP'VD	DATE	CHANGE

COLOR WHITE

Vinylinc®
VINYL BUILDING PRODUCTS INC.
 AREA = 8.109 cub in
 WEIGHT =
 TOLERANCES (EXCEPT AS NOTED)
 ±0.010

DRAWN	MG	DATE	APP'VD	MAT'L	SCALE
		2/25/05		NYLON	1/1
BRACKET				011h055-D	

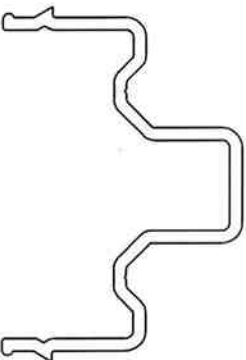


- NOTES:
1. ALL UNSPECIFIED RADII 0.015.
 2. ALCOA P/N 23111 (WHITE P-001, DESERT SAND P-029).

ESP NO. ESP0091600P-R-3

Date Verified: 4/20/12

Verified By: [Signature]



Vinyline®

VINYL BUILDING PRODUCTS INC.

AREA = 0.269 sq in

WEIGHT = 0.316 lb/ft

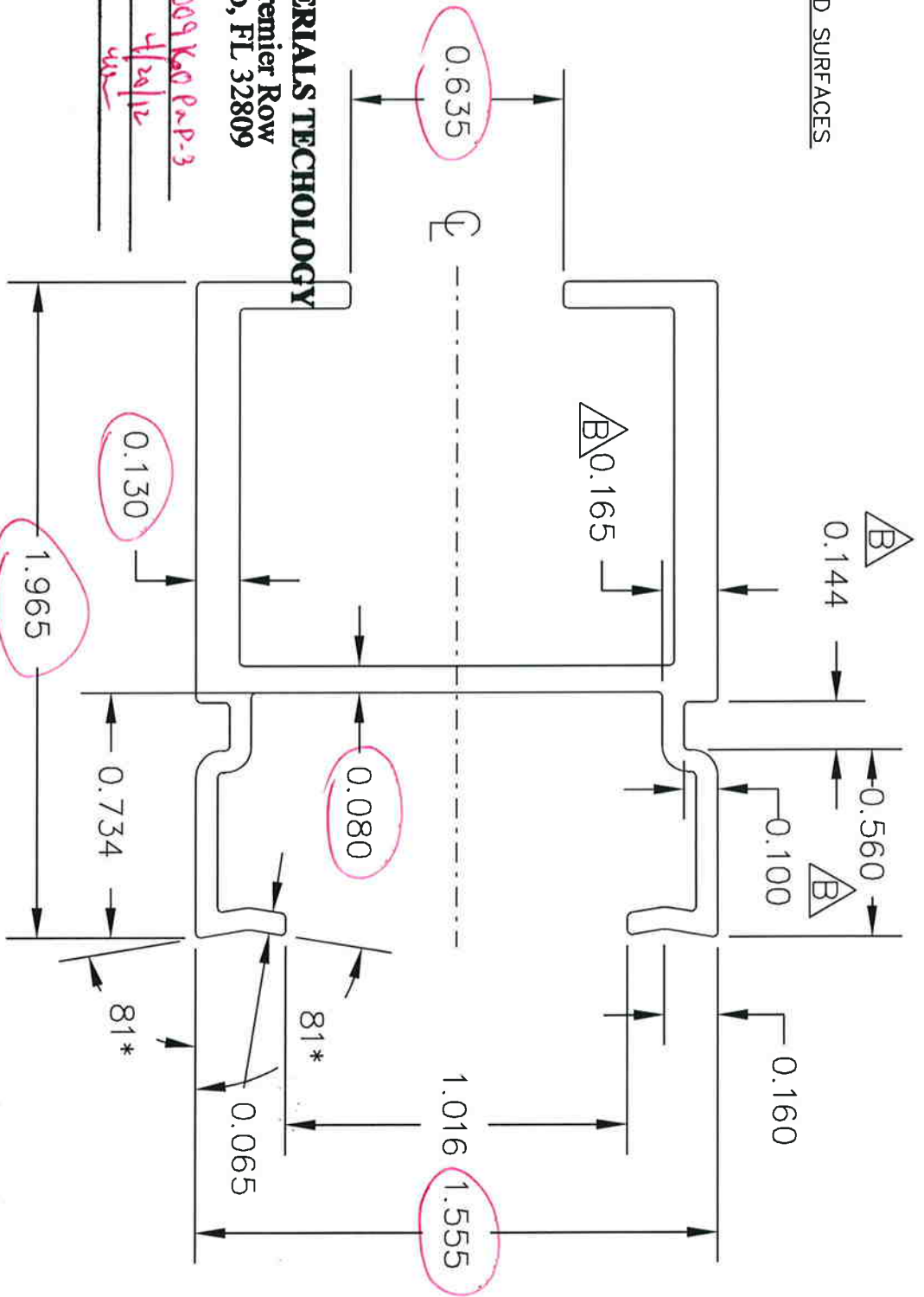
TOLERANCES (EXCEPT AS NOTED)

±0.010

DRAWN	MG	DATE	10/28/3	APP'VD	MAT'L	SCALE
					6061-T6, 6105-T5	2/1

REV	BY	APP'VD	DATE	CHANGE
				10300148

NO EXPOSED SURFACES



ELEMENT MATERIALS TECHNOLOGY
 1924 Premier Row
 Orlando, FL 32809

ESP NO. ESP009 K00 P-3
 Date Verified: 4/24/12
 Verified By: Yur

- NOTES:
 1. ALL UNSPECIFIED RADII ARE 0.015.
 2. MAKE FROM EITHER 6061-T6 or 6105-T6 ALUMINUM.
 3. ALCOA PART NUMBER 23441.

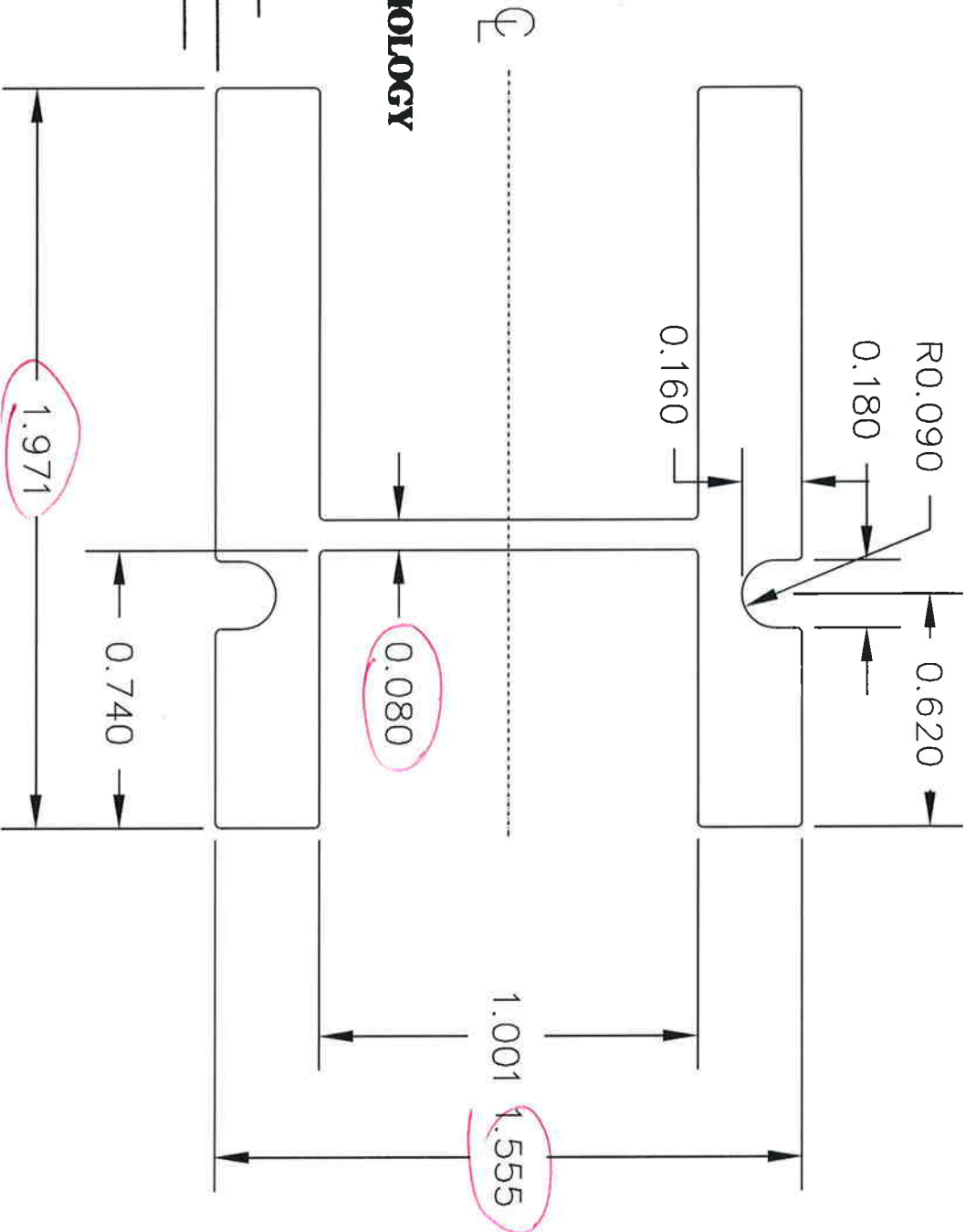
DNA# 10300150

REV	BY	APPV'D	DATE	CHANGE
B	CC		10/28/04	Renamed drawing 011H035B Dimension change
A	AL		6/4/04	CHANGED MATERIAL SPECS TO MAKE FROM EITHER 6061-T6 or 6105-T6 ALUMINUM

Vinyline® VINYL BUILDING PRODUCTS INC.
 AREA = .612 sq in.
 TOTAL WEIGHT = .7175 lb/ft.
 TOLERANCE ±0.010

DRAWN	CTC	DATE	10/28/04	APPV'D	MAT'L	Al 6105 T-6	SCALE	2:1
Sash Reinforcement								10300150

NO EXPOSED SURFACES



ELEMENT MATERIALS TECHNOLOGY

1924 Premier Row
Orlando, FL 32809

ESP NO. ESP809160P-R-3

Date Verified: 4/24/12

Verified By: W...

NOTES:
1. ALL UNSPECIFIED RADII ARE 0.015.

		VINYL BUILDING PRODUCTS INC.	
		AREA = 1.121 WEIGHT = 1.316 lb/ft	TOLERANCES (EXCEPT AS NOTED) ? .010 [0.25]

REV	BY	APP'VD	DATE	CHANGE
DRAWN MG DATE 02/05/03 APP'VD MAT'L 6T05-15 6061-16 SCALE 2/1				
SASH REINFORCEMENT XHD A 10300151				

THIS MATERIAL IS PROPRIETARY & CONFIDENTIAL TO VINYL BUILDING PRODUCTS INC. AND SHALL NOT BE REPRODUCED, COPIED, OR DISSEMINATED WITHOUT THE EXPRESSED WRITTEN PERMISSION OF VINYL BUILDING PRODUCTS INCORPORATED.

011H074

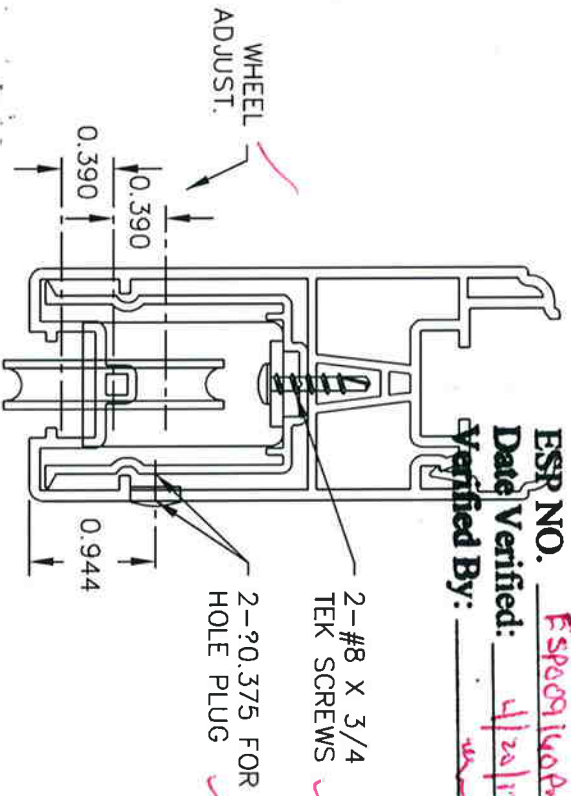
ELEVANT MATERIALS TECHNOLOGY

Premier Roll
 Quantity: 1

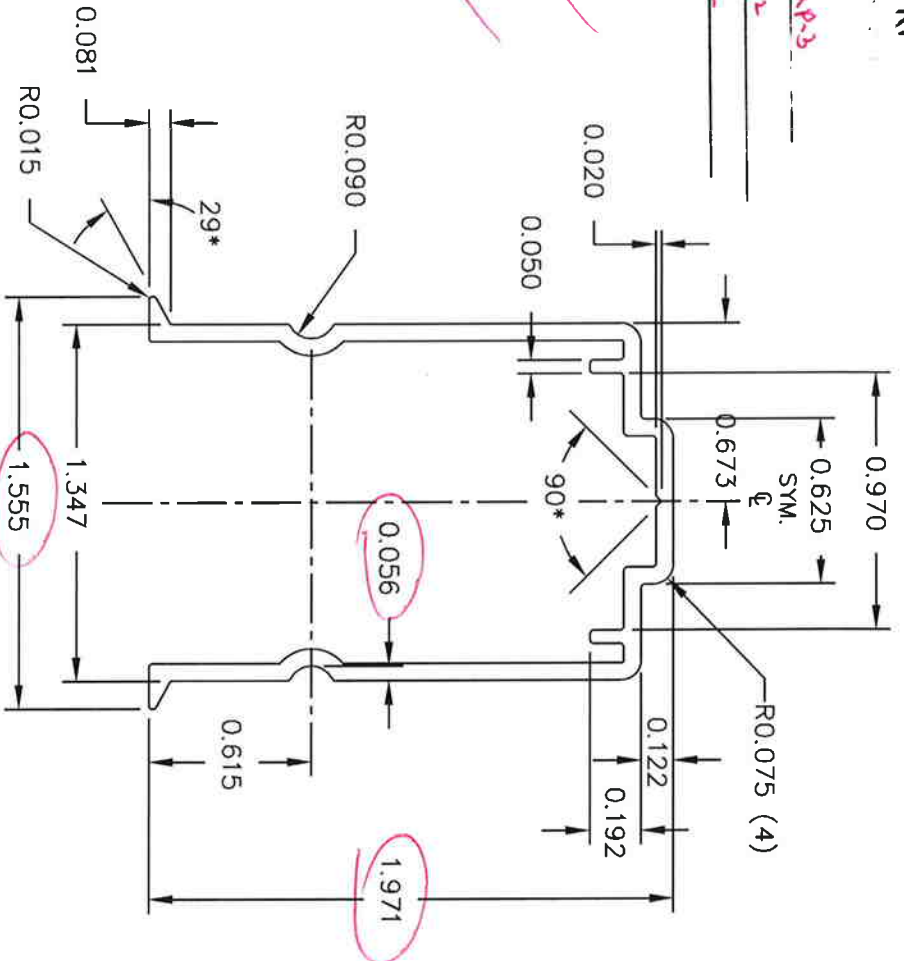
ESR NO. E5P009140A.P.3

Date Verified: 4/22/12

Verified By: [Signature]



PARTS ASSEMBLY
 SCALE: 1/2



NOTES:

1. MATERIAL: ALUM. 6005-T5, 6061-T6 or 6105-T5.
2. UNSPECIFIED WALL THICKNESS = .065".
3. BREAK ALL CORNERS R0.015.
4. NO EXPOSED SURFACES.
5. MOMENTS OF INERTIA: $I_{xx}=.147$; $I_{yy}=.118$.

DEPLIS# 10300152



deceuninck

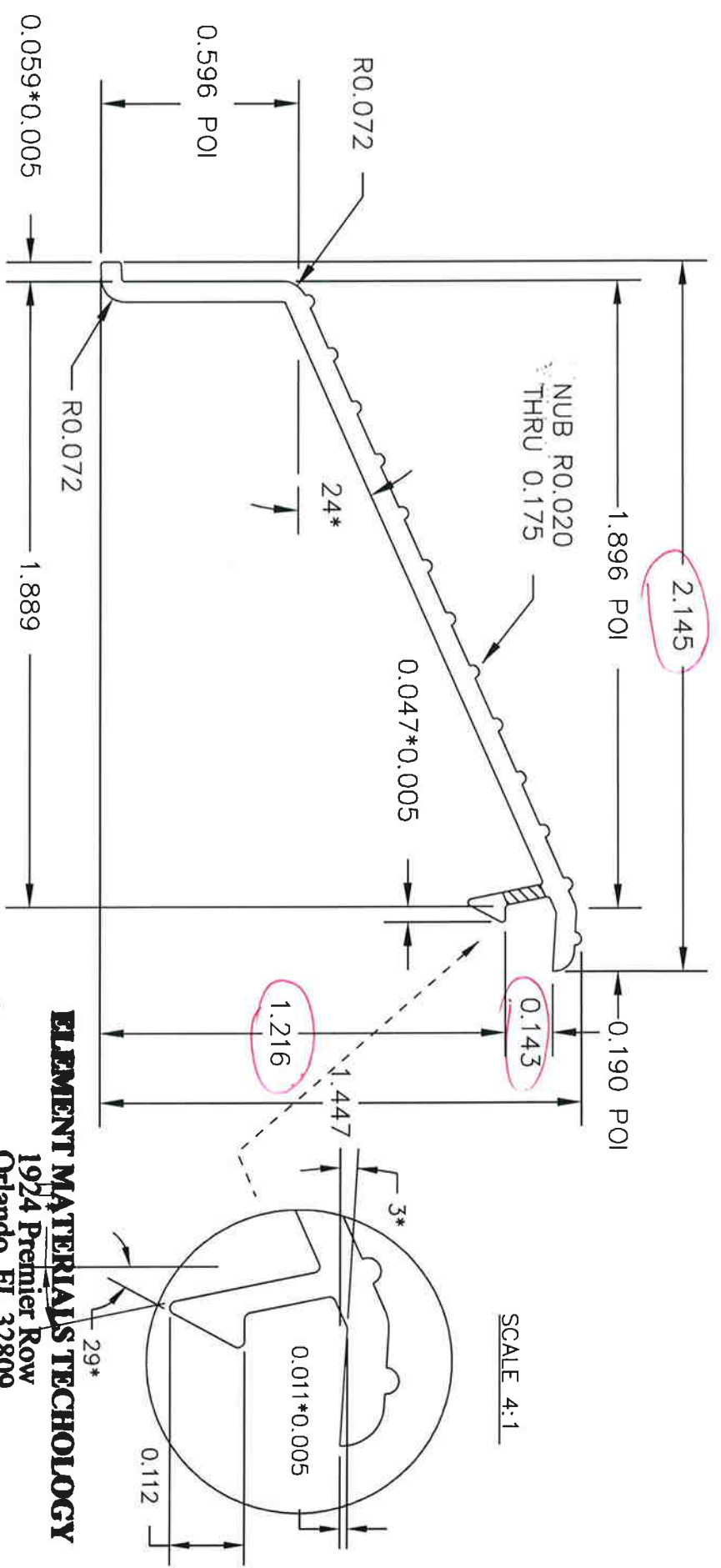
VINYL BUILDING PRODUCTS LLC

AREA = .359 sq. in.
 WT/FT = .431 lb.
 PERIM. = 11.200 in.
 FACTOR = 26

TOLERANCES (EXCEPT AS NOTED)
 AA STANDARDS

REV	BY	DATE	DESCRIPTION
-	-	-	-

DRAWN	RJK	DATE	11-30-05	APP'VD		MAT'L	NOTE 1	SCALE	FULL
RAIL INSERT-SIDE ADJUST ROLLER 10300152									

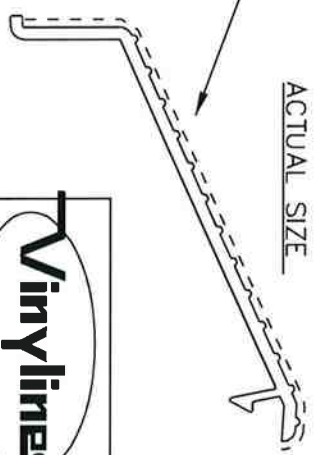


SCALE 4:1

ELEMENT MATERIALS TECHNOLOGY
 1924 Premier Row
 Orlando, FL 32809

ESP NO. ESP009160 PAB-3
 Date Verified: 4/26/12
 Verified By: WVW

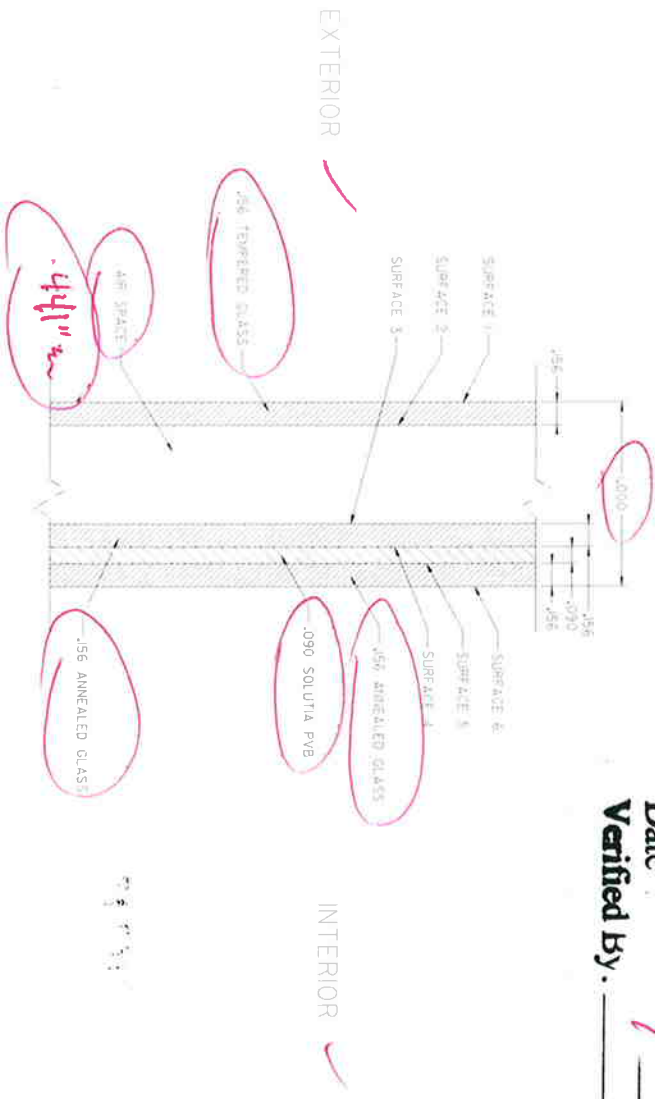
- NOTES:
1. ALL UNSPECIFIED RADII ARE 0.010.
 2. WALL THICKNESS.
 3. PAINT WITH ALCOA, PPG COLOR UC73603, POLYCRON WHITE.



A		MB		2/13/03		ADDED NOTE 3.	
REV	BY	APP'VD	DATE	CHANGE			
				VINYL BUILDING PRODUCTS inc.			
DRAWN		MG	DATE	APP'VD	AREA = 0.195 WEIGHT = 0.229 lb/ft		TOLERANCES (EXCEPT AS NOTED) ? .010 [0.25]
			12/26/00		MAT'L 606T-16 6105-T5		SCALE 2/1
SILL COVER. SLIDER				A	10300171		

ELEMENT MATERIALS TECHNOLOGY
1924 Premier Row
Orlando, FL 32809

Date _____
 Verified By: _____



ELEMENT MATERIALS TECHNOLOGY
1924 Premier Row
Orlando, FL 32809

ESP NO. ESP0091600 P & P-3
 Date Verified: 4/20/12
 Verified By: YEL

1" OVERALL LAMINATE IG
 5/32" ANNEALED PANELS WITH
 .090" SOLUTIA PVB

CONFIDENTIAL	UNLESS OTHERWISE SPECIFIED ALL DIMENSIONS ARE IN INCHES FRACTIONS SHALL BE IN 16THS OF AN INCH DIMENSIONS SHALL BE TO FACE UNLESS OTHERWISE NOTED DIMENSIONS SHALL BE TO FACE UNLESS OTHERWISE NOTED DIMENSIONS SHALL BE TO FACE UNLESS OTHERWISE NOTED	DATE: 2011 DRAWN BY: [Signature] CHECKED BY: [Signature] DATE: [Date]	deceuninck NORTH AMERICA 1" IG - .090 INNER LAYER CUT TO SIZE 7' x 6' 6 1/2" P&P T&P ORDER NO. [Number]
---------------------	--	--	--